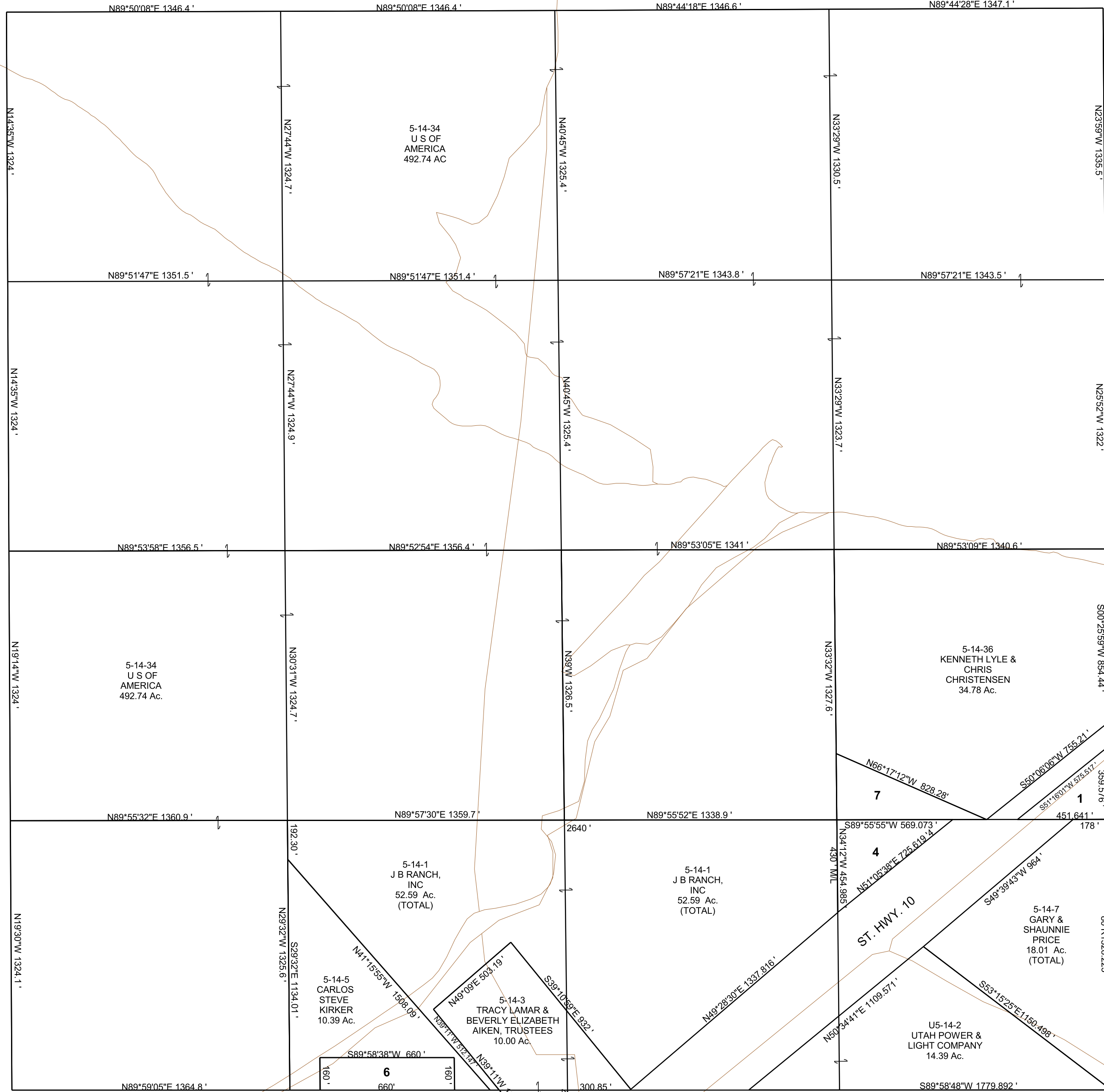


SECTION 34, T 19 S, R 7 E S.L.B. & M.

BOOK 5 PAGE 14  
SCALE: 1" = 400'  
SEPTEMBER 9, 2019

THIS PLAT IS MADE SOLELY FOR THE PURPOSE  
OF ASSISTING IN LOCATING THE LAND, AND  
THE RECORDER ASSUMES NO LIABILITY FOR  
VARIATIONS, IF ANY, WITH AN ACTUAL SURVEY.



5-14-4  
J B RANCH,  
INC  
2.97 Ac.

5-14-6  
CARLOS  
STEVE  
KIRKER  
2.43 Ac.

5-14-34  
U S OF  
AMERICA  
492.74 Ac

5-14-34  
U S OF  
AMERICA  
492.74 Ac.

5-14-36  
KENNETH LYLE &  
CHRIS  
CHRISTENSEN  
34.78 Ac.

5-14-1  
J B RANCH,  
INC  
52.59 Ac.  
(TOTAL)

5-14-1  
J B RANCH,  
INC  
52.59 Ac.  
(TOTAL)

5-14-5  
CARLOS  
STEVE  
KIRKER  
10.39 Ac.

5-14-3  
TRACY LAMAR &  
BEVERLY ELIZABETH  
AIKEN, TRUSTEES  
10.00 Ac.

5-14-7  
GARY &  
SHAUNNIE  
PRICE  
18.01 Ac.  
(TOTAL)

U5-14-2  
UTAH POWER &  
LIGHT COMPANY  
14.39 Ac.

5-14  
34-19S-07E