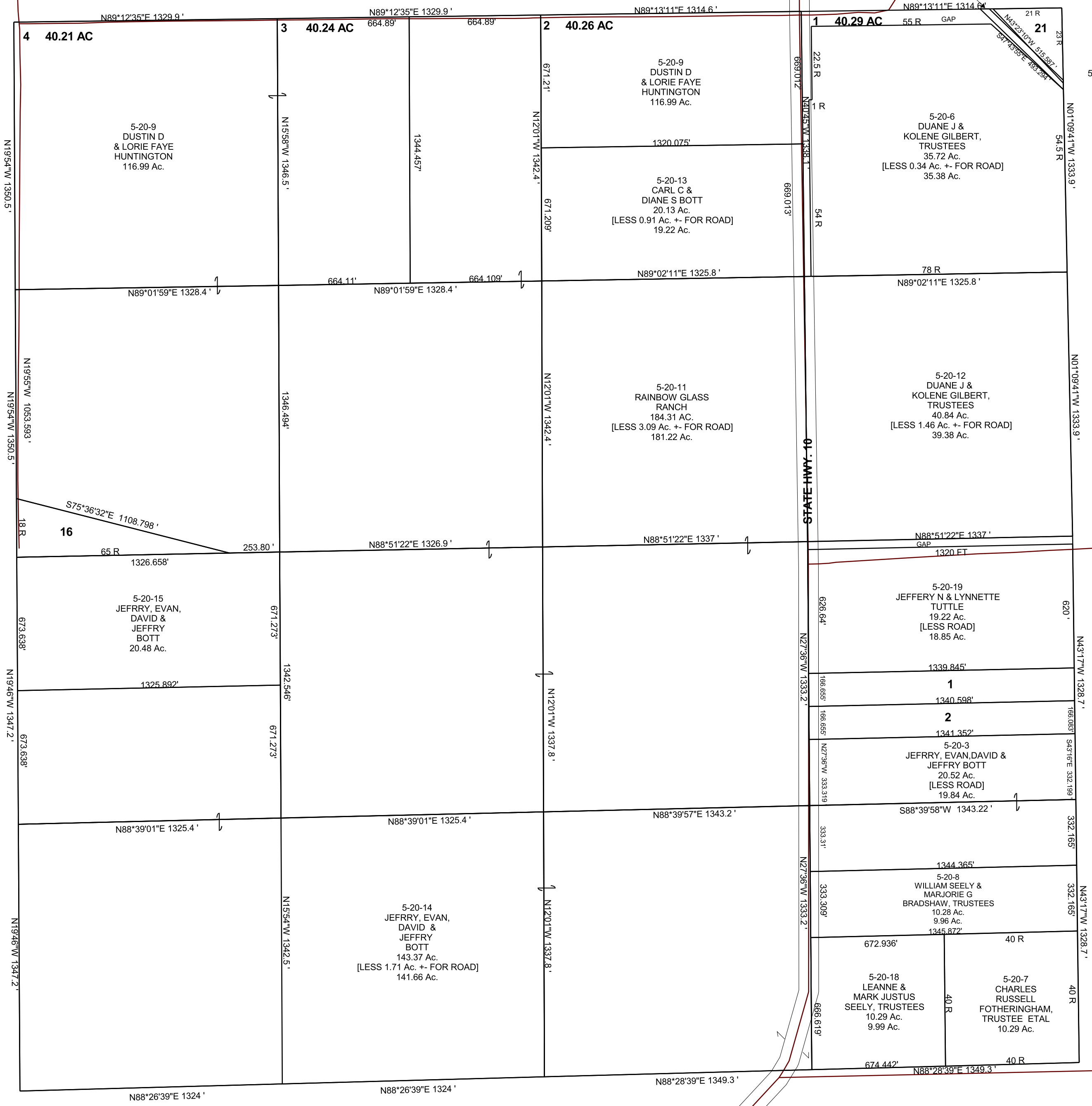


SECTION 4, T 19 S, R 08 E S.L.B. & M.

BOOK 5 PAGE 20  
SCALE: 1" = 400'  
MARCH 8, 2018

THIS PLAT IS MADE SOLELY FOR THE PURPOSE  
OF ASSISTING IN LOCATING THE LAND, AND  
THE RECORDER ASSUMES NO LIABILITY FOR  
VARIATIONS, IF ANY, WITH AN ACTUAL SURVEY.



5-20-1  
CHARLES RUSSELL  
FOTHERINGHAM,  
TRUSTEE, ETAL  
5.12 Ac. [LESS 0.19 Ac. +-  
FOR ROAD]  
4.93 Ac.

5-20-2  
VICKI LOWREY  
5.12 Ac.  
[LESS 0.19 Ac. +-  
FOR ROAD]  
4.93 Ac.

5-20-16  
JEFFRY, EVAN,  
DAVID &  
JEFFRY  
BOTT  
3.66 Ac.

5-20-21  
LAREN K &  
LANELL  
HUNTSMAN  
1.51 Ac.

5-20-20  
LAREN K &  
LANELL  
HUNTSMAN  
0.42 Ac.

5-20-19  
JEFFERY N & LYNNETTE  
TUTTLE  
19.22 Ac.  
[LESS ROAD]  
18.85 Ac.

1

2

5-20-3  
JEFFRY, EVAN, DAVID &  
JEFFRY BOTT  
20.52 Ac.  
[LESS ROAD]  
19.84 Ac.

5-20-8  
WILLIAM SEELY &  
MARJORIE G  
BRADSHAW, TRUSTEES  
10.28 Ac.  
9.96 Ac.  
1345.872'

5-20-18  
LEANNE &  
MARK JUSTUS  
SEELY, TRUSTEES  
10.29 Ac.  
9.99 Ac.

5-20-7  
CHARLES  
RUSSELL  
FOTHERINGHAM,  
TRUSTEE ETAL  
10.29 Ac.