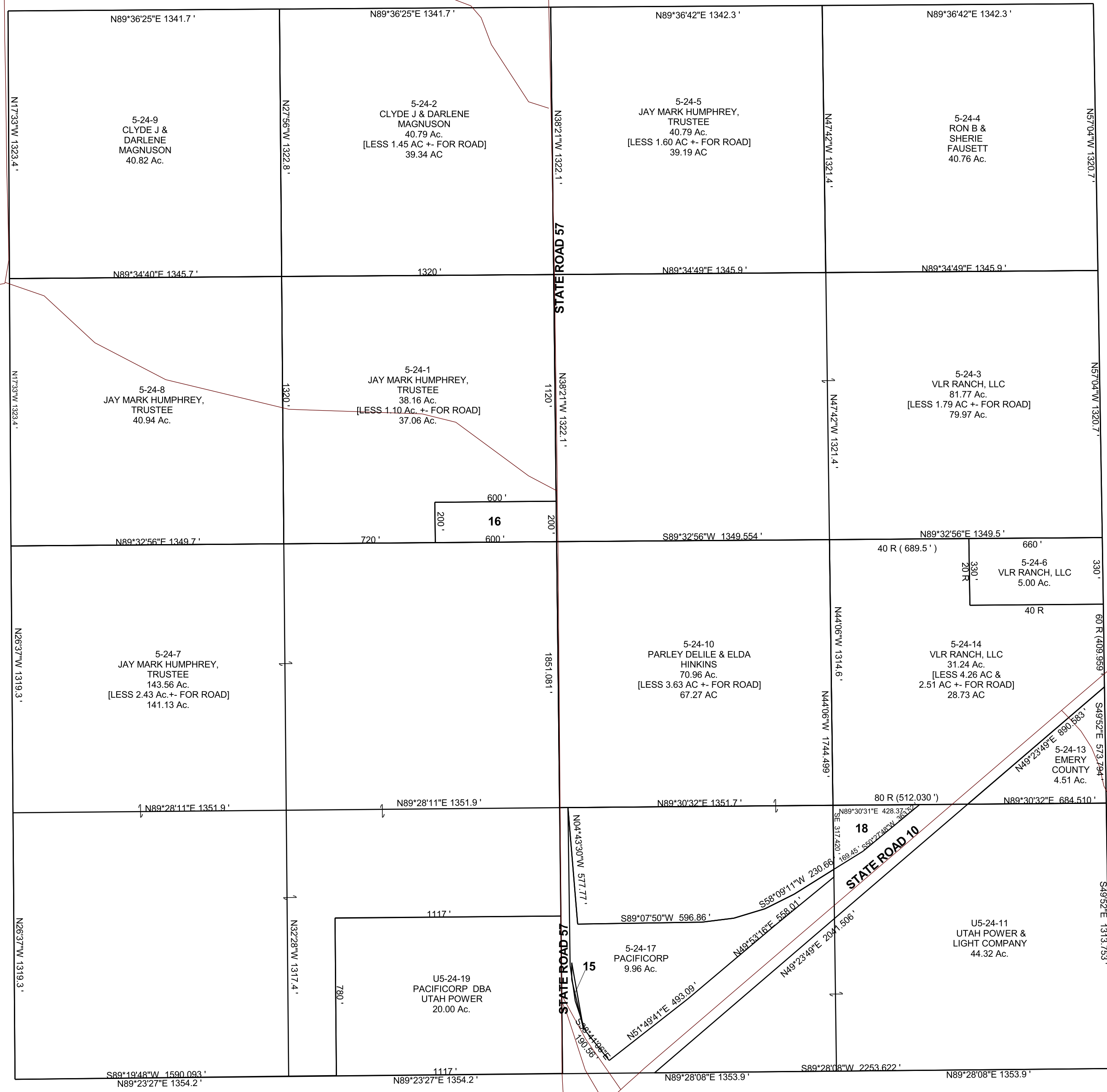


SECTION 8, T 19 S, R 08 E S.L.B. & M.

THIS PLAT IS MADE SOLELY FOR THE PURPOSE OF ASSISTING IN LOCATING THE LAND, AND THE RECORDER ASSUMES NO LIABILITY FOR VARIATIONS, IF ANY, WITH AN ACTUAL SURVEY.



L5-24-15
UTAH POWER &
LIGHT COMPANY
0.055 Ac.

5-24-16
JAY MARK
HUMPHREY
TRUSTEE
2.75 Ac.
[LESS 0.19 AC +-
FOR ROAD]
2.56 Ac.

5-24-18
RAINBOW GLASS
RANCH LLC
1.65 Ac.