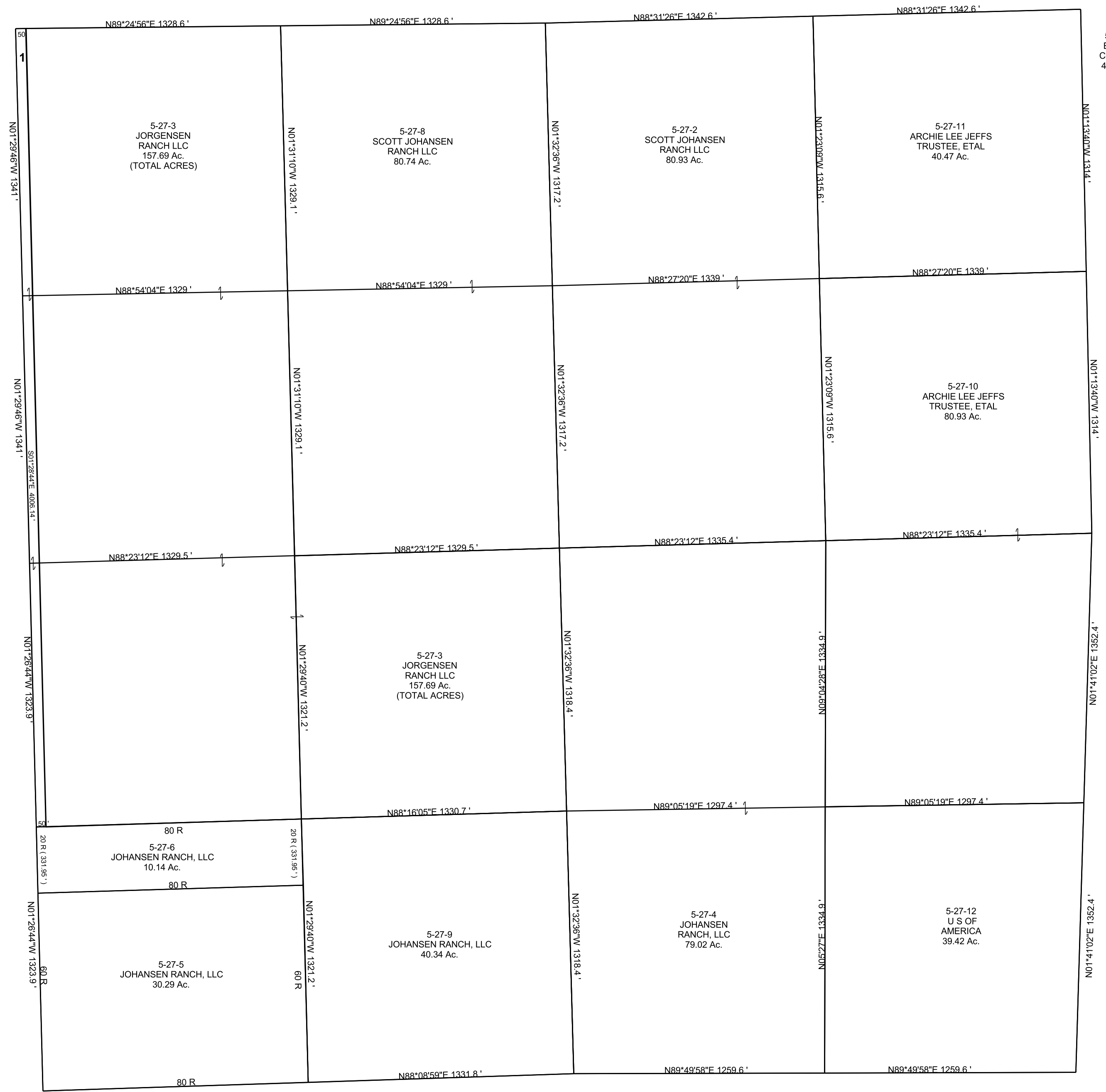


SECTION 11, T 19 S, R 8 E S.L.B. & M.

THIS PLAT IS MADE SOLELY FOR THE PURPOSE  
OF ASSISTING IN LOCATING THE LAND, AND  
THE RECORDER ASSUMES NO LIABILITY FOR  
VARIATIONS, IF ANY, WITH AN ACTUAL SURVEY.



5-27-1  
EMERY  
COUNTY  
4.71 Ac.

5-27-3  
JORGENSEN  
RANCH LLC  
157.69 Ac.  
(TOTAL ACRES)

5-27-8  
SCOTT JOHANSEN  
RANCH LLC  
80.74 Ac.

5-27-2  
SCOTT JOHANSEN  
RANCH LLC  
80.93 Ac.

5-27-11  
ARCHIE LEE JEFFS  
TRUSTEE, ETAL  
40.47 Ac.

5-27-10  
ARCHIE LEE JEFFS  
TRUSTEE, ETAL  
80.93 Ac.

5-27-3  
JORGENSEN  
RANCH LLC  
157.69 Ac.  
(TOTAL ACRES)

80 R  
5-27-6  
JOHANSEN RANCH, LLC  
10.14 Ac.  
80 R

5-27-9  
JOHANSEN RANCH, LLC  
40.34 Ac.

5-27-4  
JOHANSEN  
RANCH, LLC  
79.02 Ac.

5-27-12  
U S OF  
AMERICA  
39.42 Ac.

5-27-5  
JOHANSEN RANCH, LLC  
30.29 Ac.