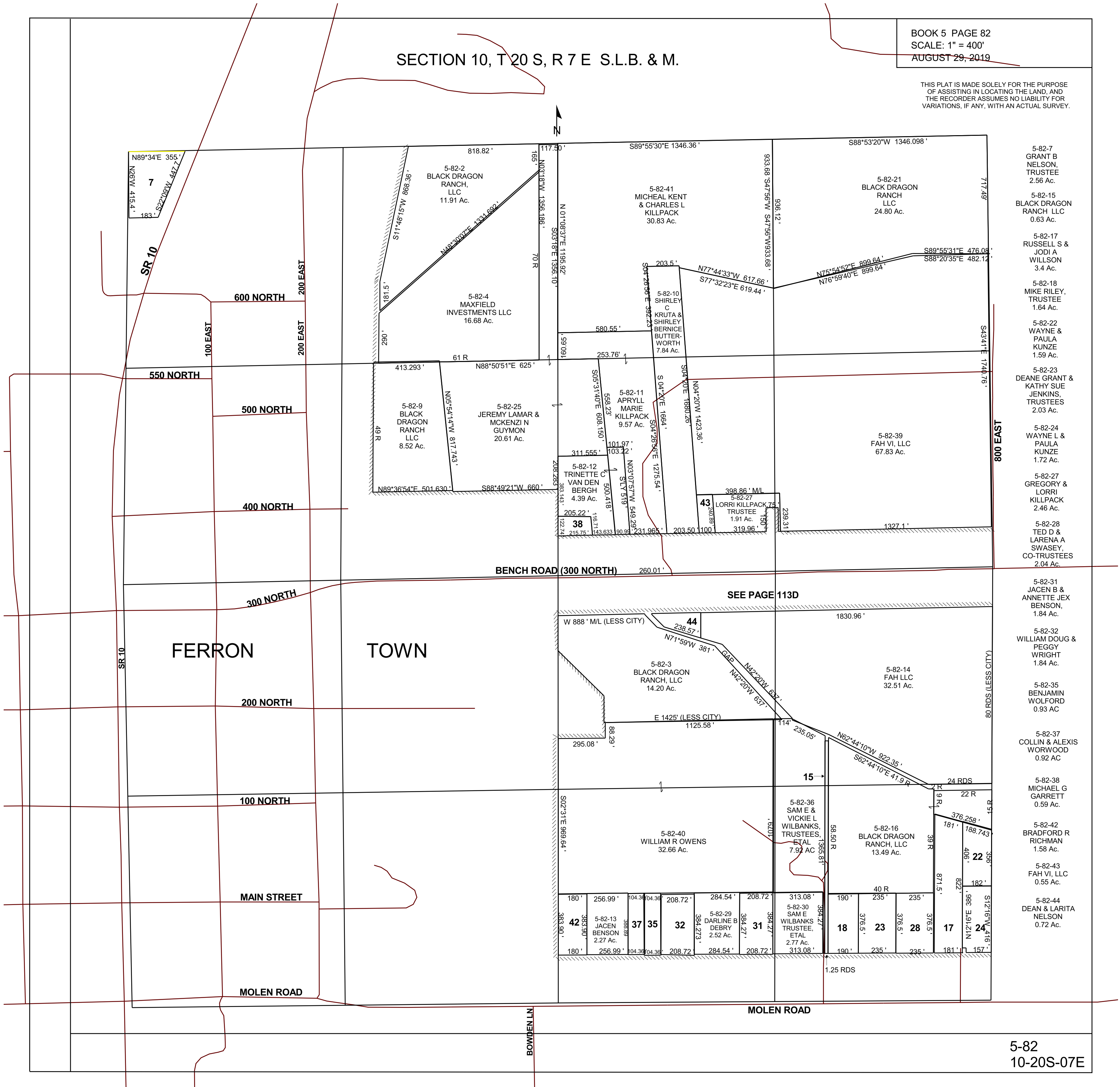


SECTION 10, T20 S, R 7 E S.L.B. & M.

BOOK 5 PAGE 82  
SCALE: 1" = 400'  
AUGUST 29, 2019

THIS PLAT IS MADE SOLELY FOR THE PURPOSE OF ASSISTING IN LOCATING THE LAND, AND THE RECORDER ASSUMES NO LIABILITY FOR VARIATIONS, IF ANY, WITH AN ACTUAL SURVEY.



- 5-82-7 GRANT B NELSON, TRUSTEE 2.56 Ac.
- 5-82-15 BLACK DRAGON RANCH LLC 0.63 Ac.
- 5-82-17 RUSSELL S & JODI A WILLSON 3.4 Ac.
- 5-82-18 MIKE RILEY, TRUSTEE 1.64 Ac.
- 5-82-22 WAYNE & PAULA KUNZE 1.59 Ac.
- 5-82-23 DEANE GRANT & KATHY SUE JENKINS, TRUSTEES 2.03 Ac.
- 5-82-24 WAYNE L & PAULA KUNZE 1.72 Ac.
- 5-82-27 GREGORY & LORRI KILLPACK 2.46 Ac.
- 5-82-28 TED D & LARENA A SWASEY, CO-TRUSTEES 2.04 Ac.
- 5-82-31 JACEN B & ANNETTE JEX BENSON, 1.84 Ac.
- 5-82-32 WILLIAM DOUG & PEGGY WRIGHT 1.84 Ac.
- 5-82-35 BENJAMIN WOLFORD 0.93 AC
- 5-82-37 COLLIN & ALEXIS WORWOOD 0.92 AC
- 5-82-38 MICHAEL G GARRETT 0.59 Ac.
- 5-82-42 BRADFORD R RICHMAN 1.58 Ac.
- 5-82-43 FAH VI, LLC 0.55 Ac.
- 5-82-44 DEAN & LARITA NELSON 0.72 Ac.

5-82  
10-20S-07E