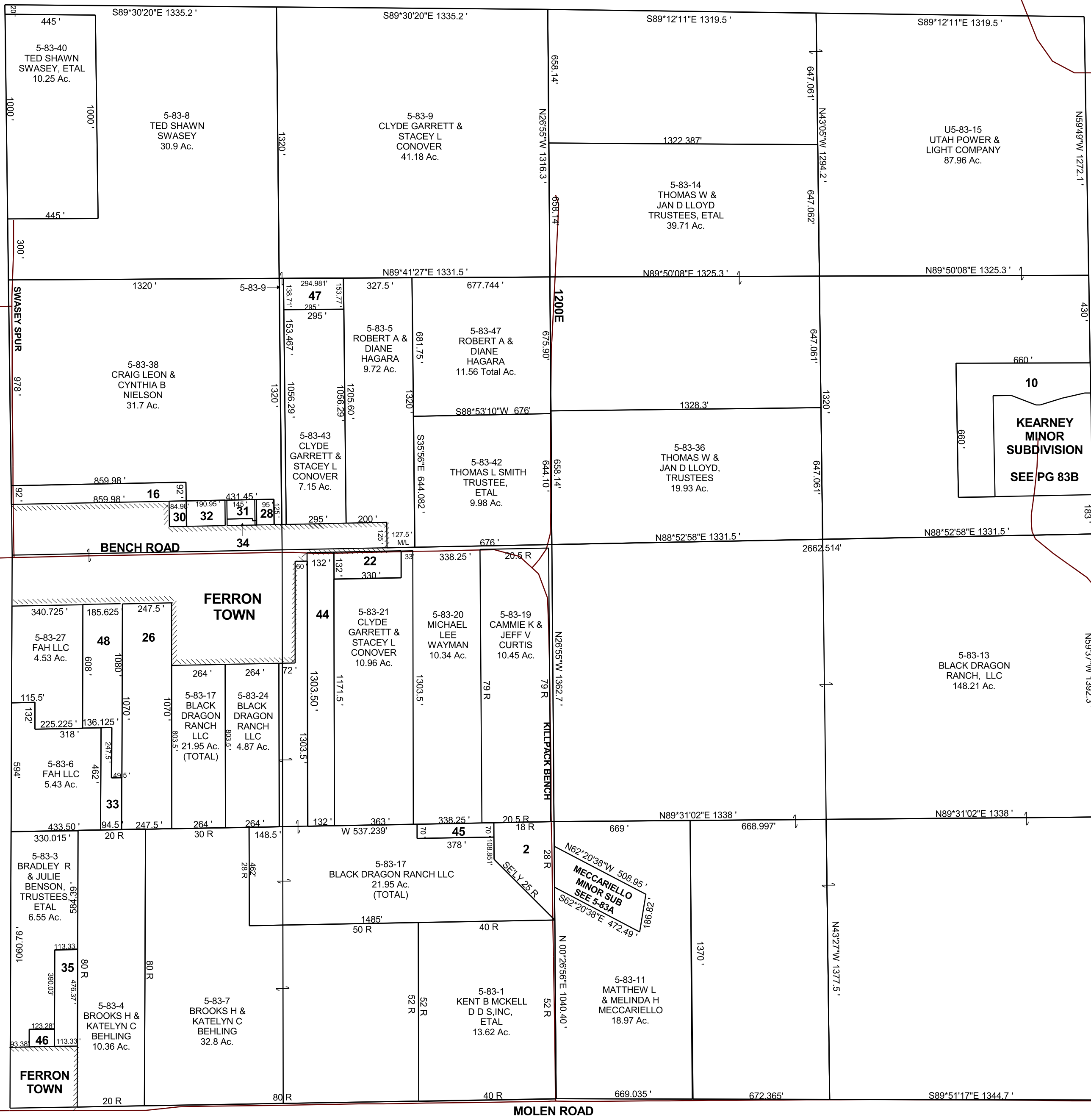


SECTION 11, T 20 S, R 7 E S.L.B. & M.

THIS PLAT IS MADE SOLELY FOR THE PURPOSE OF ASSISTING IN LOCATING THE LAND, AND THE RECORDER ASSUMES NO LIABILITY FOR VARIATIONS, IF ANY, WITH AN ACTUAL SURVEY.



- 5-83-2 MATTHEW L & MELINDA H MECCARIELLO 2.26 Ac.
- 5-83-10 KATHLEEN M KEARNEY REAVES 4.70 Ac.
- 5-83-16 RICHARD LAMOND & NELLIE SMITH 1.82 Ac.
- 5-83-22 CLYDE GARRETT & STACEY L CONOVER 1 Ac.
- 5-83-26 LEN L & PAULINE E ANDERSON, TRUSTEE 5.95 Ac.
- 5-83-28 CRAIG LEON & CYNTHIA B NIELSON 0.27 Ac.
- 5-83-31 CRAIG & CYNTHIA NIELSON 0.31 Ac.
- 5-83-30 LINDA J WHITE 0.24 Ac.
- 5-83-32 RYAN K WINN, ETAL 0.55 Ac.
- 5-83-33 LEN L ANDERSON TRUSTEE, ETAL 0.73 Ac.
- 5-83-34 CRAIG LEON & CYNTHIA B NIELSON 0.1 Ac.
- 5-83-35 DENNIS & SHERRY W WORWOOD 1.24 Ac.
- 5-83-37 SHARON K WAYMAN, ETAL 0.14 Ac.
- 5-83-44 RAINBOW GLASS RANCH, LLC 4.07 Ac.
- 5-83-45 DUSTIN & KIMBERLY DETO 0.61 Ac.
- 5-83-46 MICHAEL D LORENZEN 0.24 Ac.
- 5-83-47 ROBERT A & DIANE HAGARA 11.56 Total Ac.
- 5-83-48 LEN L & PAULINE E ANDERSON, TRUSTEEES 3.00 Ac.

MOLEN ROAD

5-83  
11-20S-07E