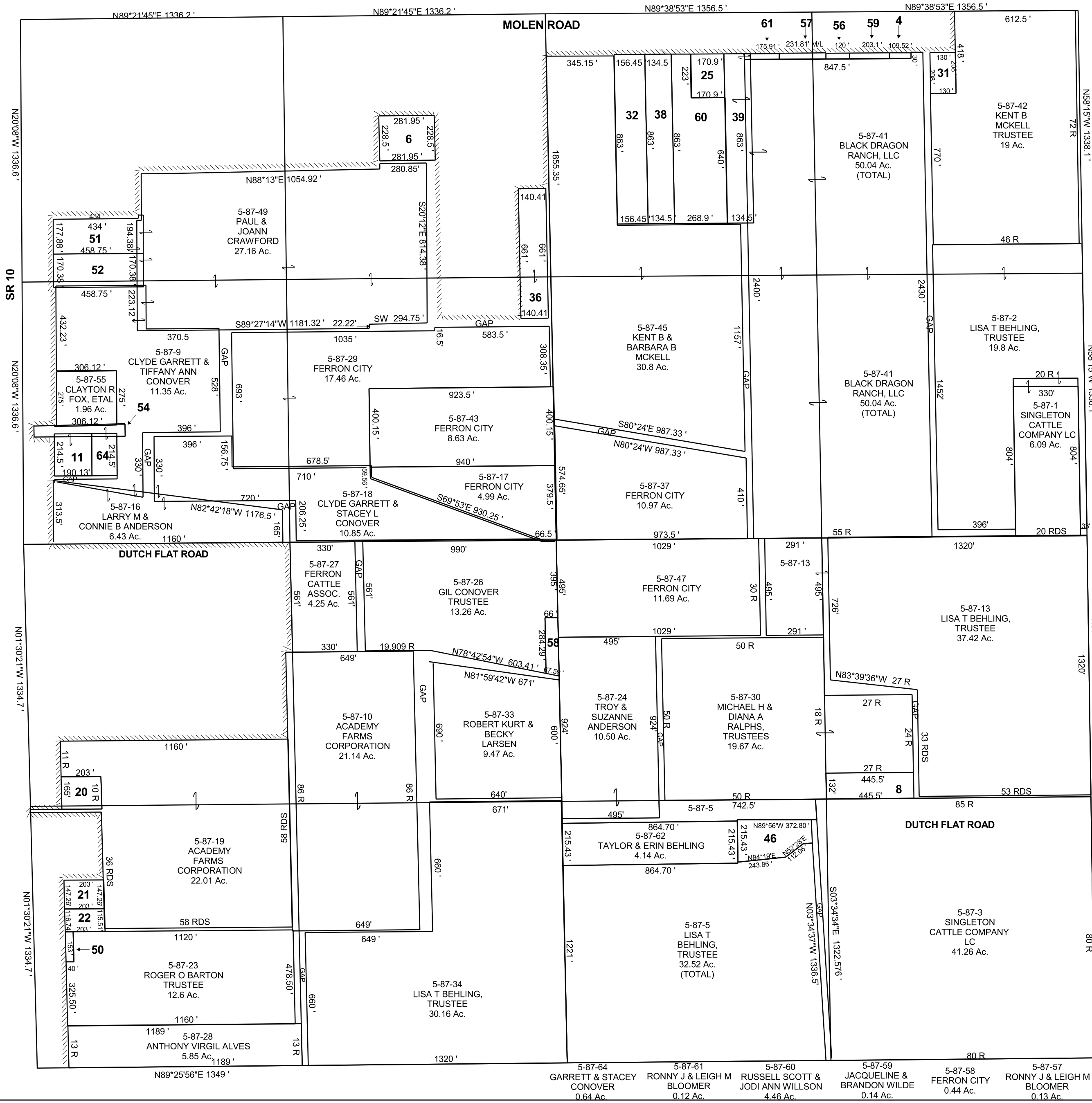


SECTION 15, T 20 S, R 07 E S.L.B. & M.

BOOK 5 PAGE 87
SCALE: 1" = 400'
AUGUST 3, 2022

THIS PLAT IS MADE SOLELY FOR THE PURPOSE OF ASSISTING IN LOCATING THE LAND, AND THE RECORDER ASSUMES NO LIABILITY FOR VARIATIONS, IF ANY, WITH AN ACTUAL SURVEY.



- 5-87-4 JACQUELINE & BRANDON WILDE 0.07 Ac.
- 5-87-6 PAUL & JOE ANN CRAWFORD 1.47 Ac.
- 5-87-8 EMERY COUNTY 1.35 Ac.
- 5-87-11 SHAWN ALLRED 0.94 Ac.
- 5-87-20 KENNETH D & DEBORAH HORROCKS 0.77 Ac.
- 5-87-21 JOHN & KAREN SPINNEY 0.69 Ac.
- 5-87-22 BRENT BARTON, TRUSTEE, ETAL 0.54 Ac.
- 5-87-25 WILLIAM A MCGEE 5.33 Ac.
- 5-87-28 DARWIN J & SHARON B BERGEMAN 0.84 Ac.
- 5-87-31 KENT & BARBARA MCKELL 0.62 Ac.
- 5-87-32 GIL & HEIDI BOWDEN, TRUSTEES, ETAL 3.10 Ac.
- 5-87-35 DEANE GRANT & KATHERINE SUE JENKINS 2.04 Ac.
- 5-87-36 RODNEY W & RAELEEN SWASEY 2.13 Ac.
- 5-87-38 RUSSELL SCOTT & JODI ANN WILLSON 2.66 Ac.
- 5-87-39 MONT E & JULIE JOHNSON 2.66 Ac.
- P5-87-46 COASTAL PLAINS ENERGY INC 1.58 Ac.
- 5-87-50 ROGER O BARTON, TRUSTEE 0.14 Ac.
- 5-87-51 RICHARD LARRY WINN 1.88 Ac.
- 5-87-52 LAURIE & SHANE PITCHFORTH 1.79 Ac.
- 5-87-53 FERRON CITY 0.083 AC
- 5-87-54 UTAH DEPARTMENT OF TRANSPORTATION 0.62 Ac.
- 5-87-56 CLIVE W & MELINDA S GORDON 0.083 Ac.
- 5-87-41 BLACK DRAGON RANCH, LLC 50.04 Ac. (TOTAL)
- 5-87-42 KENT B MCKELL TRUSTEE 19 Ac.
- 5-87-2 LISA T BEHLING, TRUSTEE 19.8 Ac.
- 5-87-41 BLACK DRAGON RANCH, LLC 50.04 Ac. (TOTAL)
- 5-87-45 KENT B & BARBARA B MCKELL 30.8 Ac.
- 5-87-43 FERRON CITY 8.63 Ac.
- 5-87-17 FERRON CITY 4.99 Ac.
- 5-87-37 FERRON CITY 10.97 Ac.
- 5-87-27 FERRON CATTLE ASSOC. 4.25 Ac.
- 5-87-26 GIL CONOVER TRUSTEE 13.26 Ac.
- 5-87-24 TROY & SUZANNE ANDERSON 10.50 Ac.
- 5-87-30 MICHAEL H & DIANA A RALPHS, TRUSTEES 19.67 Ac.
- 5-87-5 TAYLOR & ERIN BEHLING 4.14 Ac.
- 5-87-5 LISA T BEHLING, TRUSTEE 32.52 Ac. (TOTAL)
- 5-87-3 SINGLETON CATTLE COMPANY LC 41.26 Ac.
- 5-87-18 CLYDE GARRETT & STACEY L CONOVER 10.85 Ac.
- 5-87-9 CLYDE GARRETT & TIFFANY ANN CONOVER 11.35 Ac.
- 5-87-19 ACADEMY FARMS CORPORATION 22.01 Ac.
- 5-87-23 ROGER O BARTON TRUSTEE 12.6 Ac.
- 5-87-28 ANTHONY VIRGIL ALVES 5.85 Ac.
- 5-87-10 ACADEMY FARMS CORPORATION 21.14 Ac.
- 5-87-33 ROBERT KURT & BECKY LARSEN 9.47 Ac.
- 5-87-58 GARRETT & STACEY CONOVER 0.64 Ac.
- 5-87-61 RONNY J & LEIGH M BLOOMER 0.12 Ac.
- 5-87-60 RUSSELL SCOTT & JODI ANN WILLSON 4.46 Ac.
- 5-87-59 JACQUELINE & BRANDON WILDE 0.14 Ac.
- 5-87-58 FERRON CITY 0.44 Ac.
- 5-87-57 RONNY J & LEIGH M BLOOMER 0.13 Ac.
- 5-87-49 PAUL & JOANN CRAWFORD 27.16 Ac.
- 5-87-29 FERRON CITY 17.46 Ac.
- 5-87-16 LARRY M & CONNIE B ANDERSON 6.43 Ac.
- 5-87-13 LISA T BEHLING, TRUSTEE 37.42 Ac.
- 5-87-34 LISA T BEHLING, TRUSTEE 30.16 Ac.
- 5-87-13 SINGLETON CATTLE COMPANY LC 6.09 Ac.
- 5-87-10 ACADAMY FARMS CORPORATION 21.14 Ac.
- 5-87-30 MICHAEL H & DIANA A RALPHS, TRUSTEES 19.67 Ac.
- 5-87-5 TAYLOR & ERIN BEHLING 4.14 Ac.
- 5-87-5 LISA T BEHLING, TRUSTEE 32.52 Ac. (TOTAL)
- 5-87-3 SINGLETON CATTLE COMPANY LC 41.26 Ac.
- 5-87-18 CLYDE GARRETT & STACEY L CONOVER 10.85 Ac.
- 5-87-9 CLYDE GARRETT & TIFFANY ANN CONOVER 11.35 Ac.
- 5-87-19 ACADEMY FARMS CORPORATION 22.01 Ac.
- 5-87-23 ROGER O BARTON TRUSTEE 12.6 Ac.
- 5-87-28 ANTHONY VIRGIL ALVES 5.85 Ac.
- 5-87-10 ACADEMY FARMS CORPORATION 21.14 Ac.
- 5-87-33 ROBERT KURT & BECKY LARSEN 9.47 Ac.
- 5-87-58 GARRETT & STACEY CONOVER 0.64 Ac.
- 5-87-61 RONNY J & LEIGH M BLOOMER 0.12 Ac.
- 5-87-60 RUSSELL SCOTT & JODI ANN WILLSON 4.46 Ac.
- 5-87-59 JACQUELINE & BRANDON WILDE 0.14 Ac.
- 5-87-58 FERRON CITY 0.44 Ac.
- 5-87-57 RONNY J & LEIGH M BLOOMER 0.13 Ac.