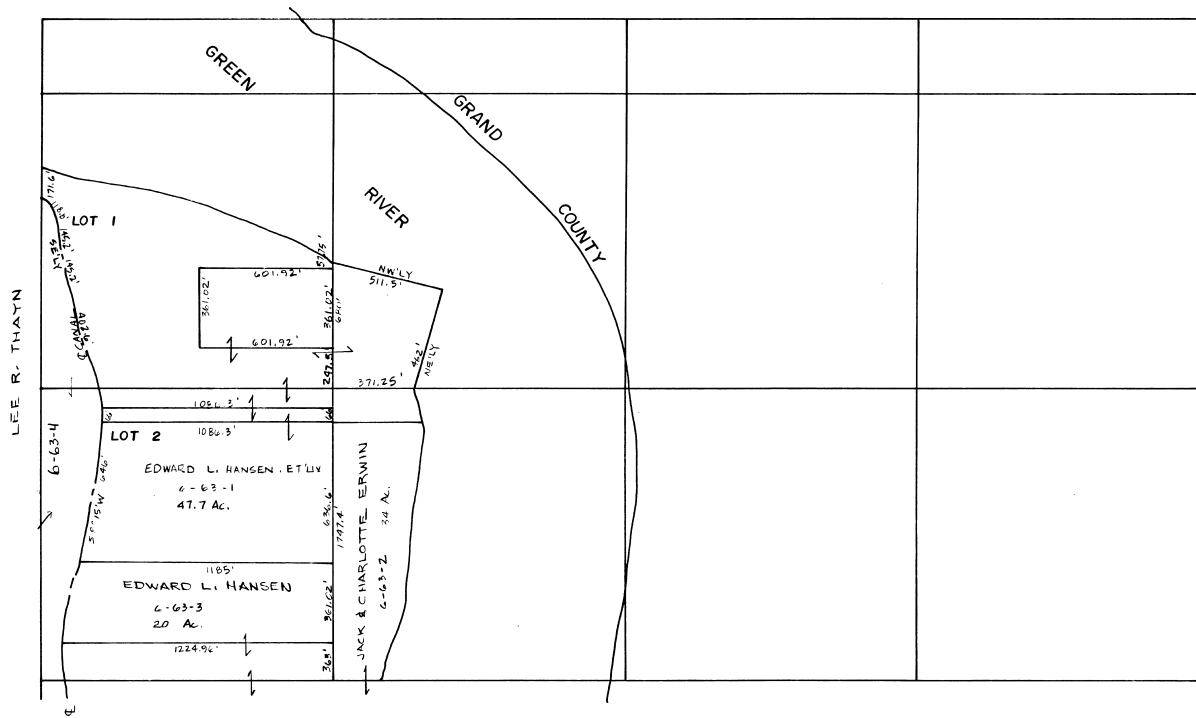


NORTH 1/2 SECTION 3 T 21S R 16E S.L.B.&M.

THIS PLAT IS MADE SOLELY FOR THE PURPOSE OF ASSISTING IN LOCATING THE LAND, AND THE RECORDER ASSUMES NO LIABILITY FOR VARIATIONS IF ANY, WITH AN ACTUAL SURVEY



REVISIONS	INITIAL	AND DATE

NOTES

U.S.T.C.
approval
Date:

PLAT DEPARTMENT
EMERY COUNTY, UTAH

Section 3 T21 R16E
drawn by: RS date: 12/80

book page
6 63
scale 1" = 400'