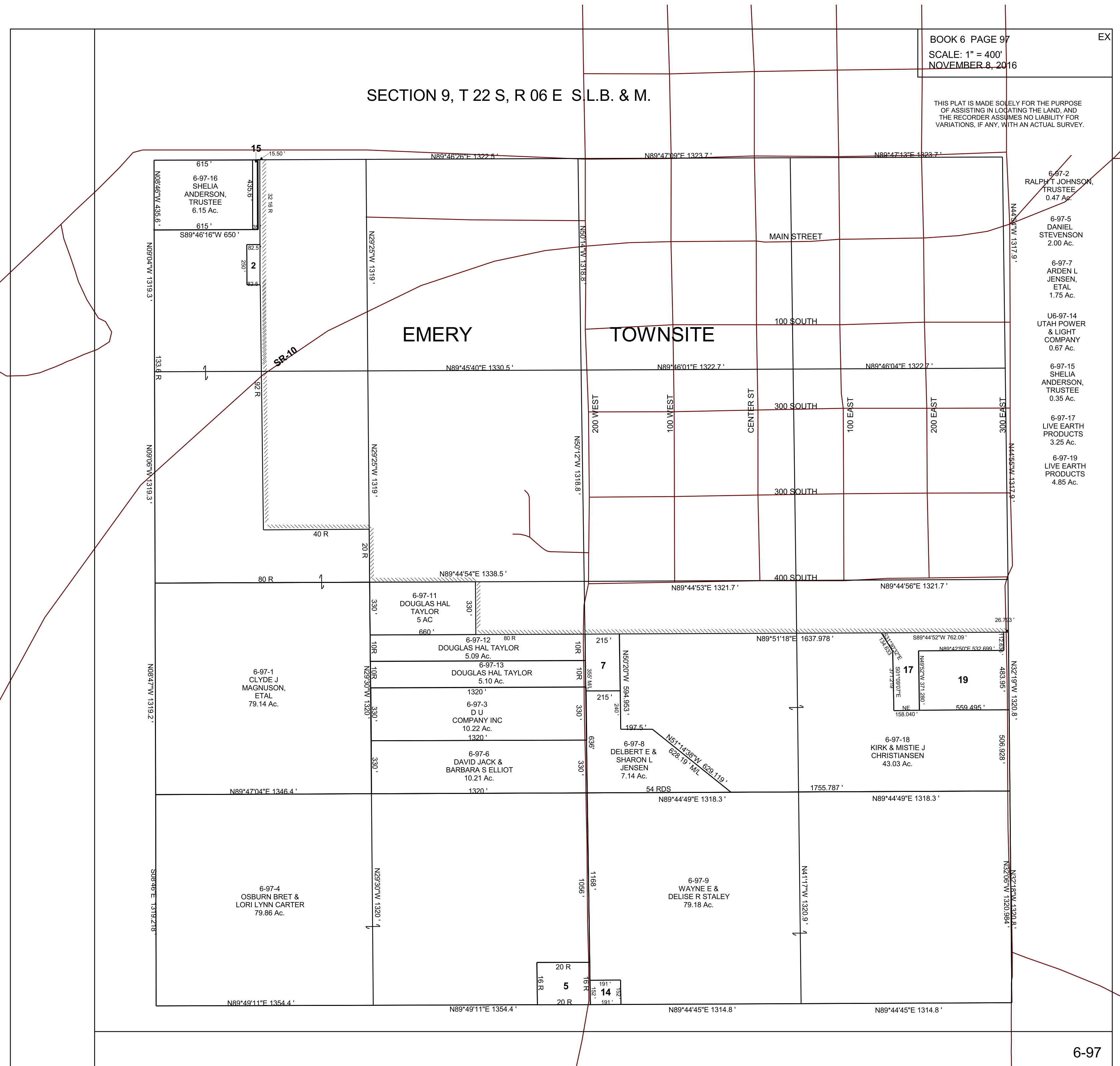


SECTION 9, T 22 S, R 06 E S.L.B. & M.

THIS PLAT IS MADE SOLELY FOR THE PURPOSE OF ASSISTING IN LOCATING THE LAND, AND THE RECORDER ASSUMES NO LIABILITY FOR VARIATIONS, IF ANY, WITH AN ACTUAL SURVEY.



- 6-97-2 RALPH T JOHNSON, TRUSTEE 0.47 Ac.
- 6-97-5 DANIEL STEVENSON 2.00 Ac.
- 6-97-7 ARDEN L JENSEN, ETAL 1.75 Ac.
- U6-97-14 UTAH POWER & LIGHT COMPANY 0.67 Ac.
- 6-97-15 SHELIA ANDERSON, TRUSTEE 0.35 Ac.
- 6-97-17 LIVE EARTH PRODUCTS 3.25 Ac.
- 6-97-19 LIVE EARTH PRODUCTS 4.85 Ac.