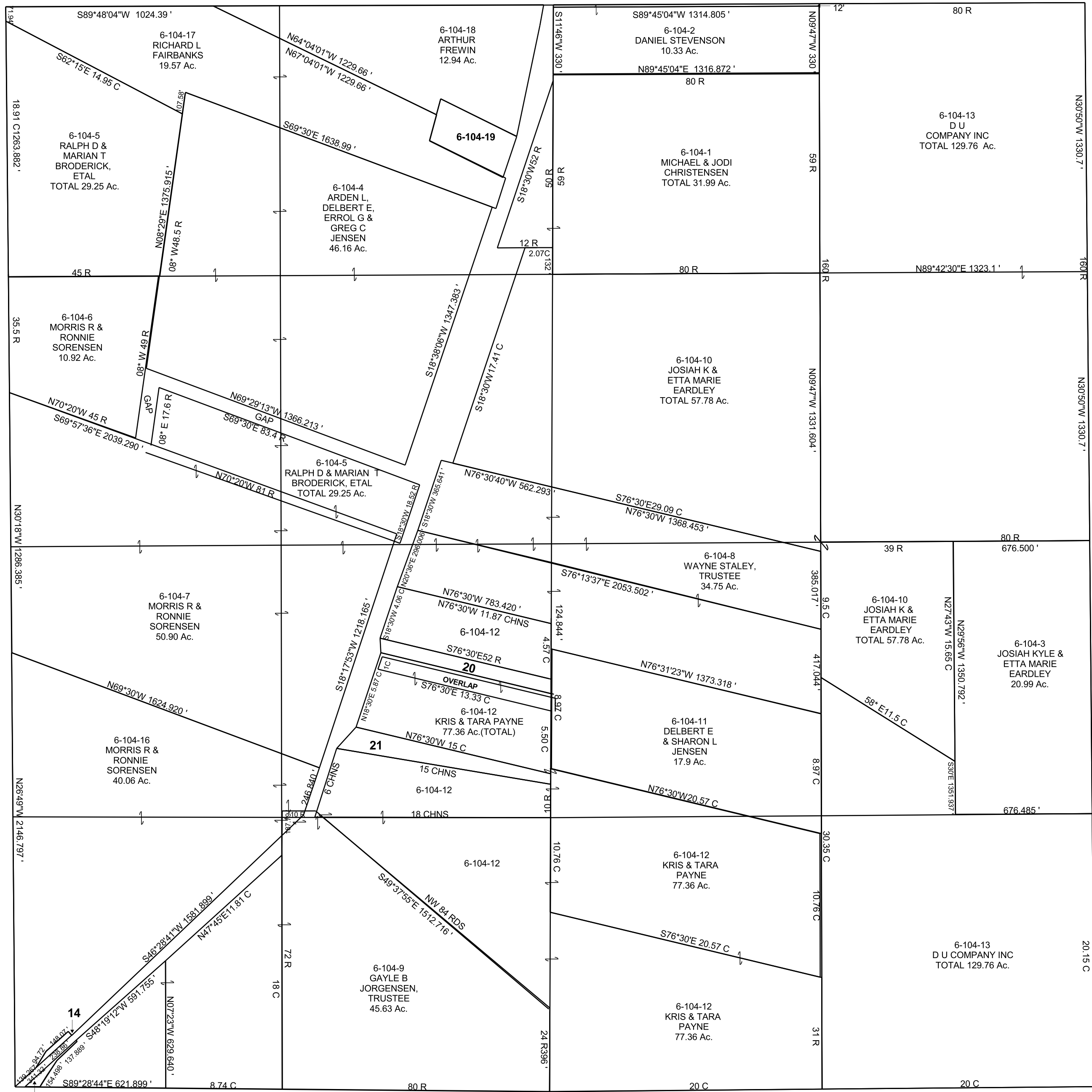


SECTION 16, T 22 S, R 06 E S.L.B. & M.

BOOK 6 PAGE 104
SCALE: 1" = 400'
MARCH 12, 2018

THIS PLAT IS MADE SOLELY FOR THE PURPOSE
OF ASSISTING IN LOCATING THE LAND, AND
THE RECORDER ASSUMES NO LIABILITY FOR
VARIATIONS, IF ANY, WITH AN ACTUAL SURVEY.



- 6-104-14 EMERY COUNTY 0.12 Ac.
- 6-104-15 EMERY COUNTY 0.16 Ac.
- 6-104-19 ERIC R ANDERSON 2.01 Ac.
- 6-104-20 KRIS & TARA PAYNE 1.39 Ac.
- 6-104-21 KRIS & TARA PAYNE 2.05 Ac.