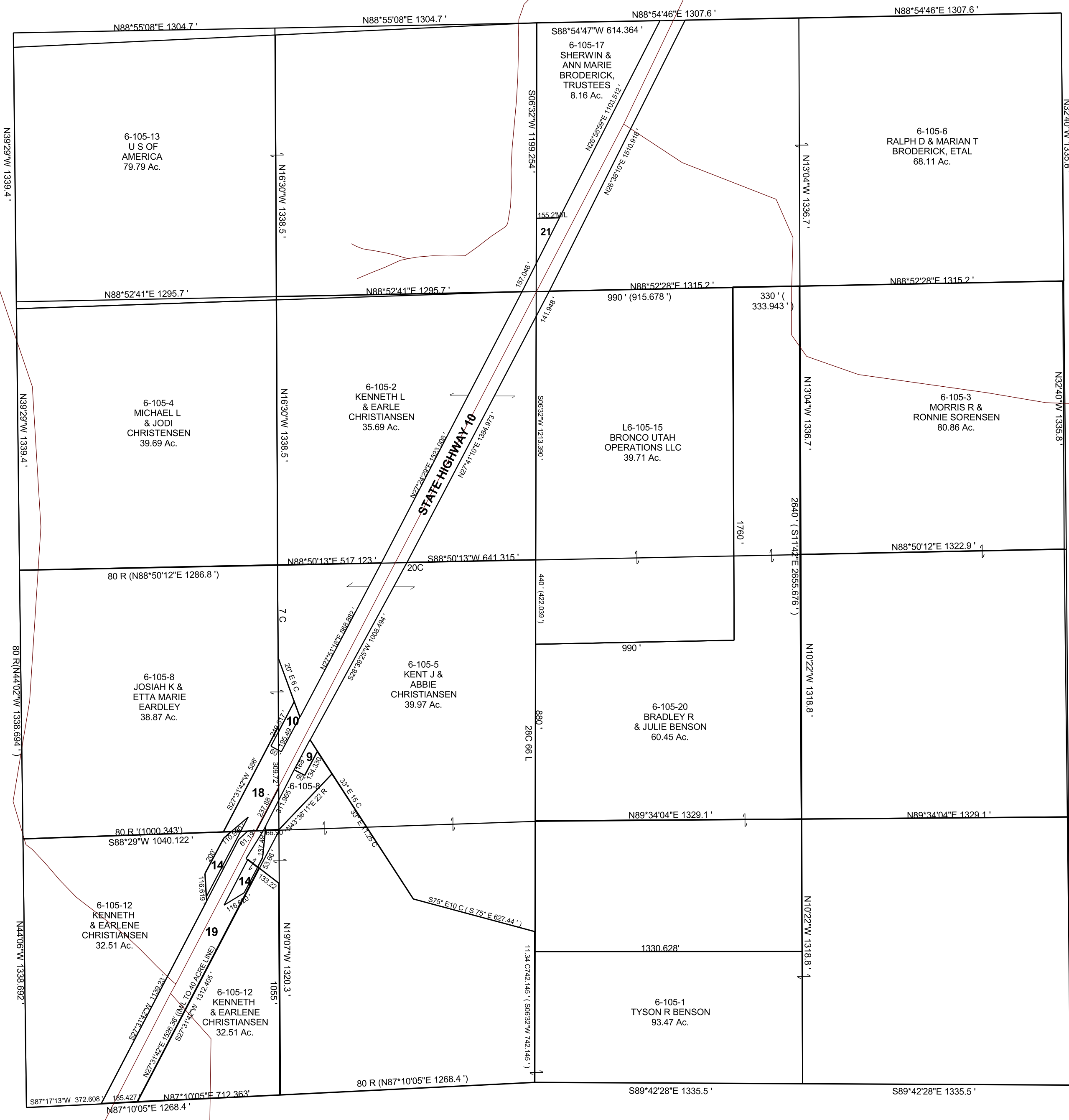


SECTION 17, T 22 S, R 06 E S.L.B. & M.

THIS PLAT IS MADE SOLELY FOR THE PURPOSE OF ASSISTING IN LOCATING THE LAND, AND THE RECORDER ASSUMES NO LIABILITY FOR VARIATIONS, IF ANY, WITH AN ACTUAL SURVEY.



- 6-105-9 U D O T 0.21 Ac.
- 6-105-10 U D O T 0.31 Ac.
- 6-105-6 RALPH D & MARIAN T BRODERICK, ETAL 68.11 Ac.
- 6-105-14 U D O T 19.03 Ac.+-
- 6-105-18 U D O T 0.45 Ac.
- 6-105-19 U D O T 5.50 Ac.
- 6-105-21 KEMMERER COAL COMPANY 0.48 Ac.