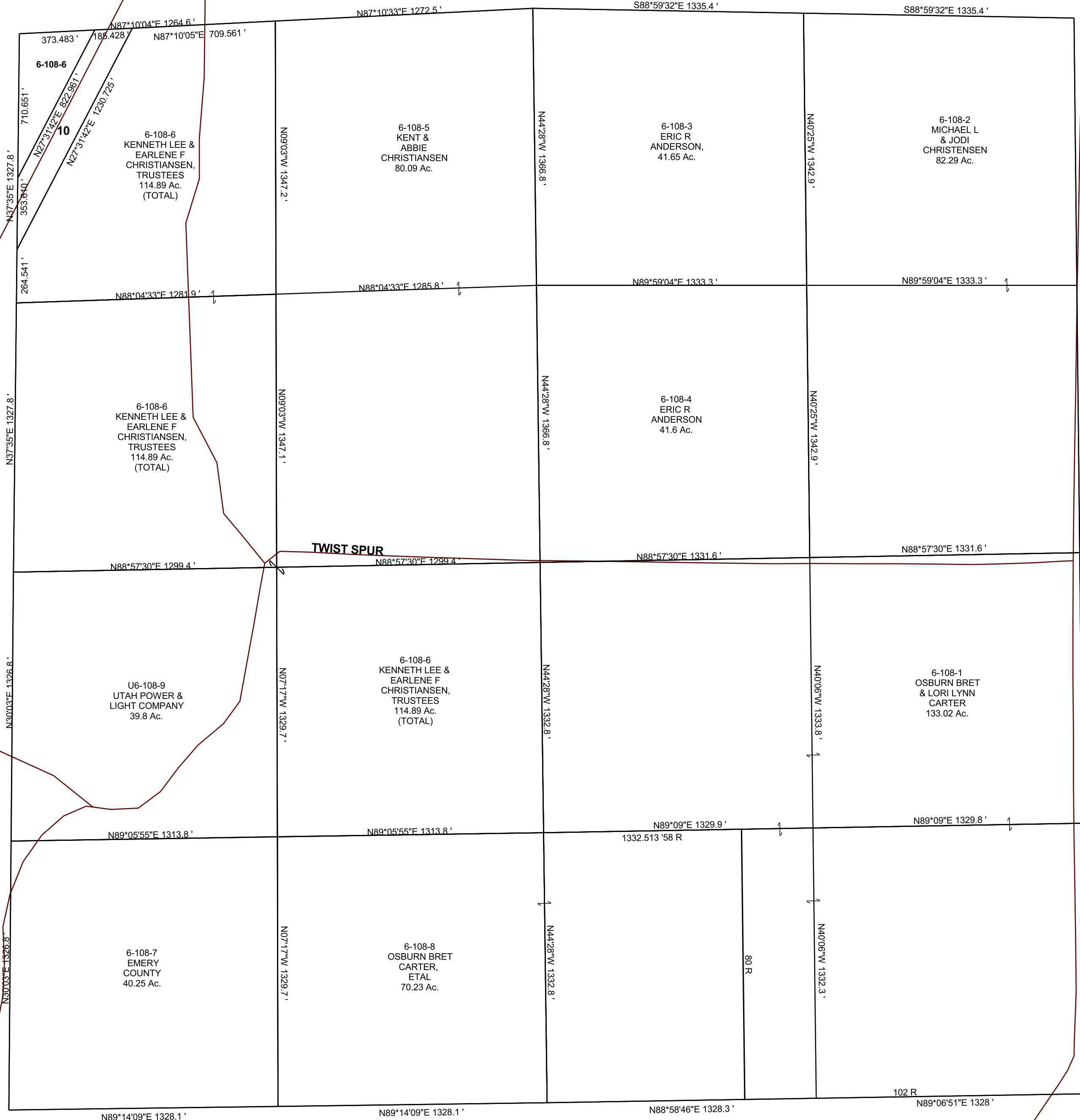


SECTION 20, T 22 S, R 6 E S.L.B. & M.

BOOK 6 PAGE 108  
SCALE: 1" = 400'  
FEBRUARY 13, 2018

THIS PLAT IS MADE SOLELY FOR THE PURPOSE  
OF ASSISTING IN LOCATING THE LAND, AND  
THE RECORDER ASSUMES NO LIABILITY FOR  
VARIATIONS, IF ANY, WITH AN ACTUAL SURVEY.



6-108-10  
UTAH  
DEPARTMENT  
OF  
TRANSPORTATION  
3.77 Ac.

EMERY OLD STATE RD

N35°26'W 1334.9'

N35°26'W 1334.9'

6-108  
20-22S-06E