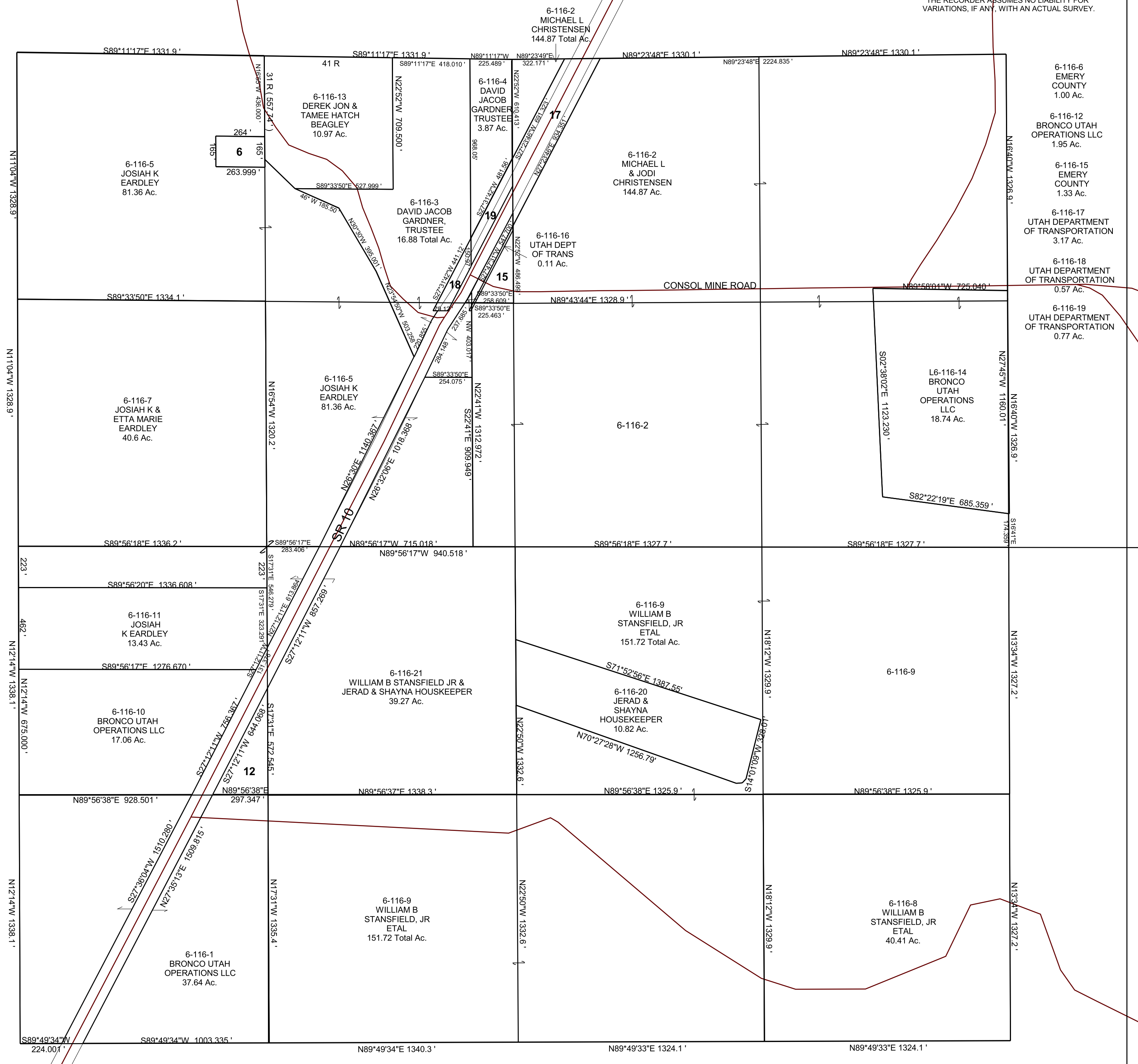


SECTION 30, T 22 S, R 6 E S.L.B. & M.

THIS PLAT IS MADE SOLELY FOR THE PURPOSE OF ASSISTING IN LOCATING THE LAND, AND THE RECORDER ASSUMES NO LIABILITY FOR VARIATIONS, IF ANY, WITH AN ACTUAL SURVEY.



- 6-116-6 EMERY COUNTY 1.00 Ac.
- 6-116-12 BRONCO UTAH OPERATIONS LLC 1.95 Ac.
- 6-116-15 EMERY COUNTY 3.33 Ac.
- 6-116-17 UTAH DEPARTMENT OF TRANSPORTATION 3.17 Ac.
- 6-116-18 UTAH DEPARTMENT OF TRANSPORTATION 0.57 Ac.
- 6-116-19 UTAH DEPARTMENT OF TRANSPORTATION 0.77 Ac.