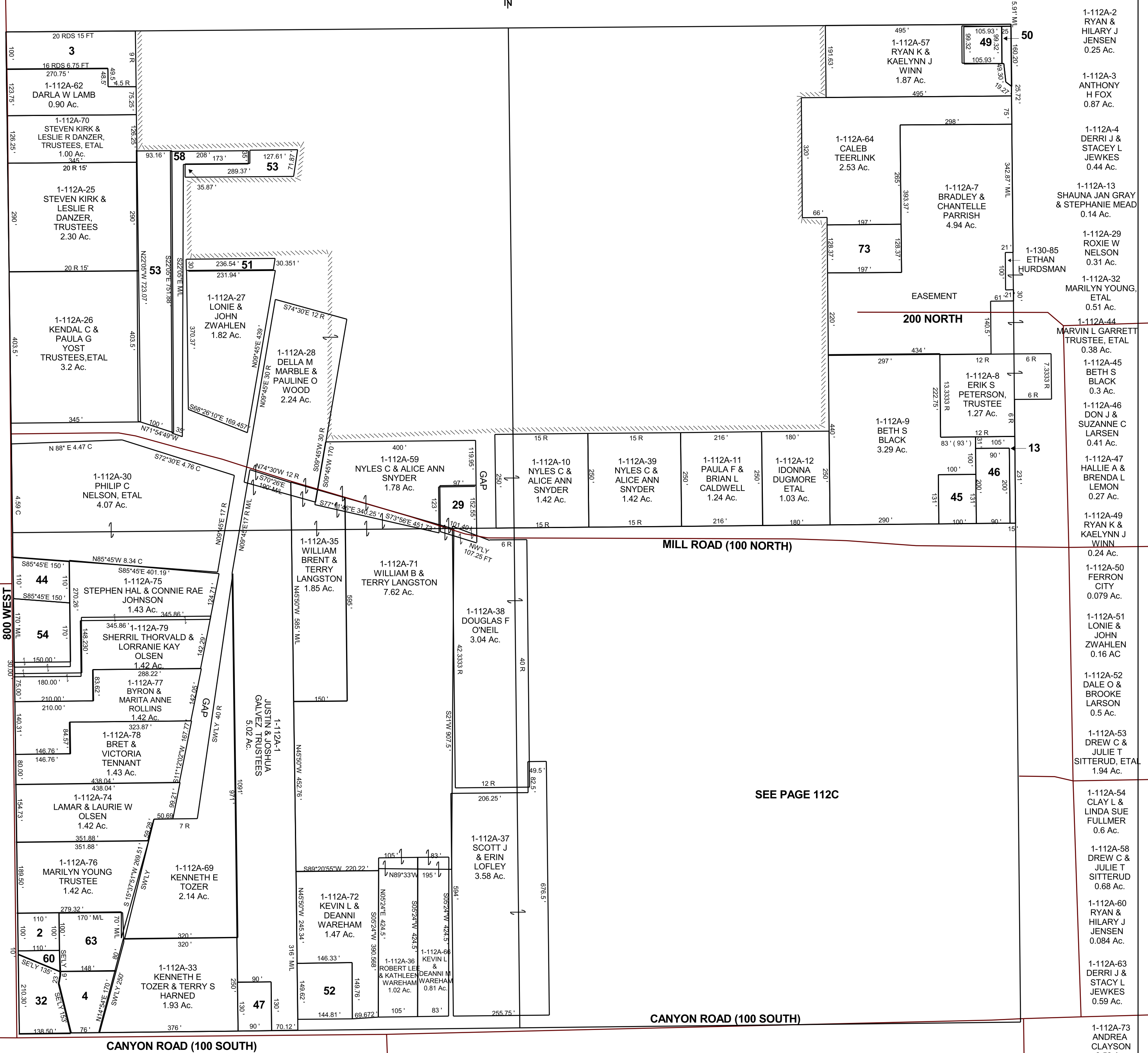


FERRON

SW/4 SECTION 9, T 20 S, R 07 E S.L.B. & M.

BOOK 1 PAGE 112A  
SCALE: 1" = 200'  
NOVEMBER 20, 2019

THIS PLAT IS MADE SOLELY FOR THE PURPOSE  
OF ASSISTING IN LOCATING THE LAND, AND  
THE RECORDER ASSUMES NO LIABILITY FOR  
VARIATIONS, IF ANY, WITH AN ACTUAL SURVEY.



SEE PAGE 112C

- 1-112A-2 RYAN & HILARY J JENSEN 0.25 Ac.
- 1-112A-3 ANTHONY H FOX 0.87 Ac.
- 1-112A-4 DERRI J & STACEY L JEWKES 0.44 Ac.
- 1-112A-13 SHAUNA JAN GRAY & STEPHANIE MEAD 0.14 Ac.
- 1-112A-29 ROXIE W NELSON 0.31 Ac.
- 1-112A-32 MARILYN YOUNG, ETAL 0.51 Ac.
- 1-112A-44 MARVIN L GARRETT TRUSTEE, ETAL 0.38 Ac.
- 1-112A-45 BETH S BLACK 0.3 Ac.
- 1-112A-46 DON J & SUZANNE C LARSEN 0.41 Ac.
- 1-112A-47 HALLIE A & BRENDA L LEMON 0.27 Ac.
- 1-112A-49 RYAN K & KAELYNN J WINN 0.24 Ac.
- 1-112A-50 FERRON CITY 0.079 Ac.
- 1-112A-51 LONIE & JOHN ZWAHLEN 0.16 AC
- 1-112A-52 DALE O & BROOKE LARSON 0.5 Ac.
- 1-112A-53 DREW C & JULIE T SITTERUD, ETAL 1.94 Ac.
- 1-112A-54 CLAY L & LINDA SUE FULLMER 0.6 Ac.
- 1-112A-58 DREW C & JULIE T SITTERUD 0.68 Ac.
- 1-112A-60 RYAN & HILARY J JENSEN 0.084 Ac.
- 1-112A-63 DERRI J & STACY L JEWKES 0.59 Ac.
- 1-112A-73 ANDREA CLAYSON 0.58 Ac.

1-112A  
9-20S-07E