

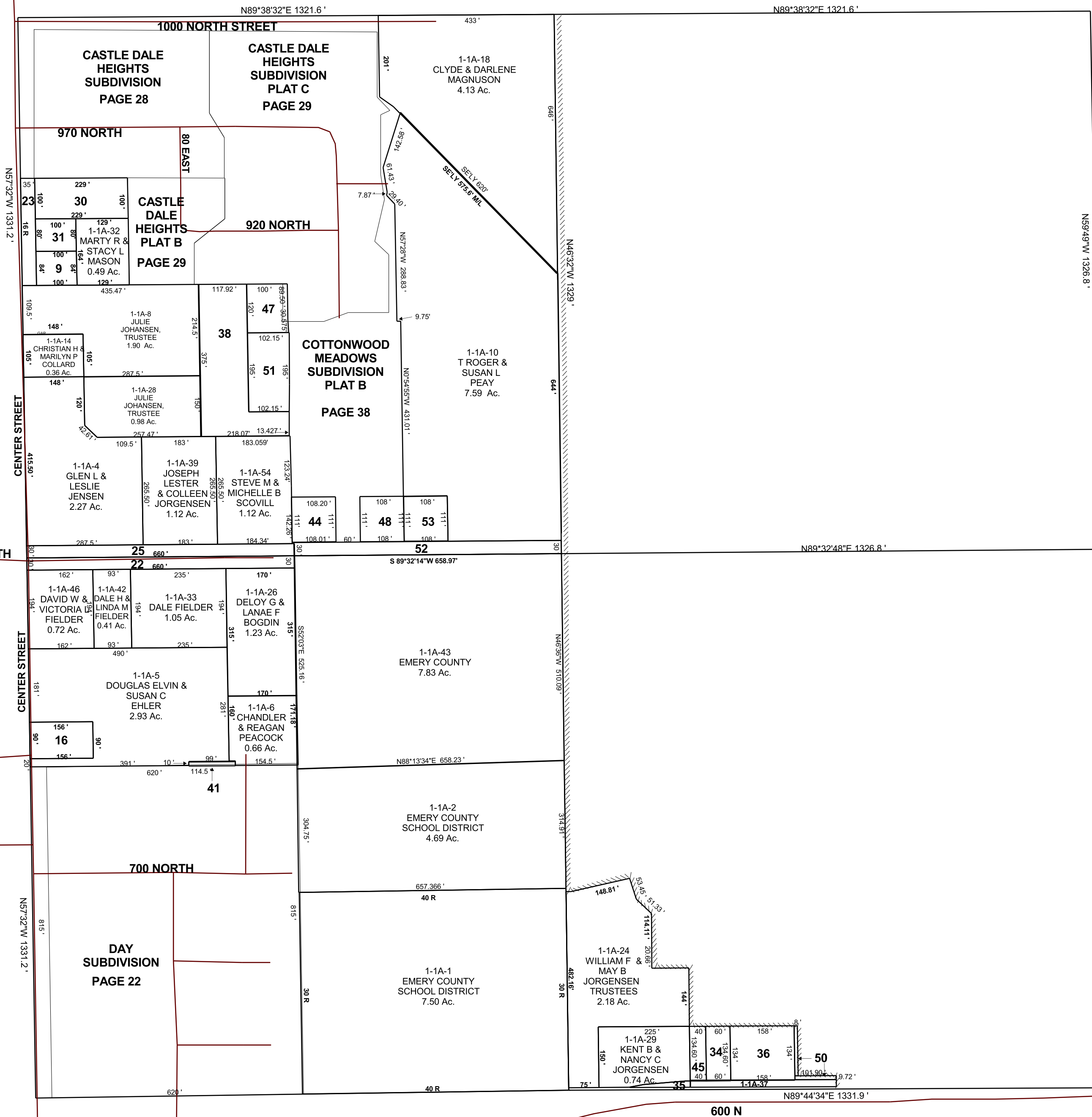
CASTLE DALE

SW/4 SECTION 27, T 18 S, R 08 E S.L.B. & M.

BOOK 1 PAGE 1A  
SCALE: 1" = 200'  
AUGUST 15, 2019

EX

THIS PLAT IS MADE SOLELY FOR THE PURPOSE  
OF ASSISTING IN LOCATING THE LAND, AND  
THE RECORDER ASSUMES NO LIABILITY FOR  
VARIATIONS, IF ANY, WITH AN ACTUAL SURVEY.



- 1-1A-7  
ZORA J FIELDER,  
TRUSTEE  
0.32 Ac.
- 1-1A-9  
EMERY COUNTY  
0.19 Ac.
- 1-1A-16  
RALPH C & COREY E  
BLUEMEL  
0.32 Ac.
- 1-1A-22  
CASTLE DALE CITY  
0.45 Ac.
- 1-1A-23  
CASTLE DALE CITY  
0.21 Ac.
- 1-1A-25  
CASTLE DALE CITY  
0.45 Ac.
- 1-1A-30  
JACK R & LORIE A  
ROGERS TRUSTEES  
0.53 AC
- 1-1A-31  
AARON L ISAACSON  
0.18 Ac.
- 1-1A-32  
MARTY R & STACY L  
MASON  
0.49 Ac.
- 1-1A-34  
KENT B & NANCY B  
JORGENSEN  
0.19 Ac.
- 1-1A-35  
CASTLE DALE CITY  
0.034 Ac.
- 1-1A-36  
BLAKE BROWN  
0.49 Ac.
- 1-1A-37  
CASTLE DALE CITY  
0.14 Ac.
- 1-1A-38  
CHARLES V  
& AMANDA M  
LAWRENCE  
1.14 Ac.
- 1-1A-41  
FRED LEROY  
0.026 Ac.
- 1-1A-44  
STEVEN M & ALISON M  
DALEY  
0.28 Ac.
- 1-1A-45  
KENT B & NANCY C  
JORGENSEN  
0.12 Ac.
- 1-1A-47  
BRODY & ANYA  
LEROY  
0.28 Ac.
- 1-1A-48  
RUSSELL D TAYLOR &  
MAGALY R AMORES  
0.28 Ac.
- 1-1A-50  
MAGNUSON LIVESTOCK,  
LLC  
0.05 Ac.
- 1-1A-51  
CHRISTOPHER L &  
SAMANTHA J  
JOHNSON  
0.46 Ac.
- 1-1A-52  
CASTLE DALE CITY  
0.45 M/L Ac.
- 1-1A-53  
RUSSELL TAYLOR  
0.28 Ac.

1-1A  
27-18S-08E