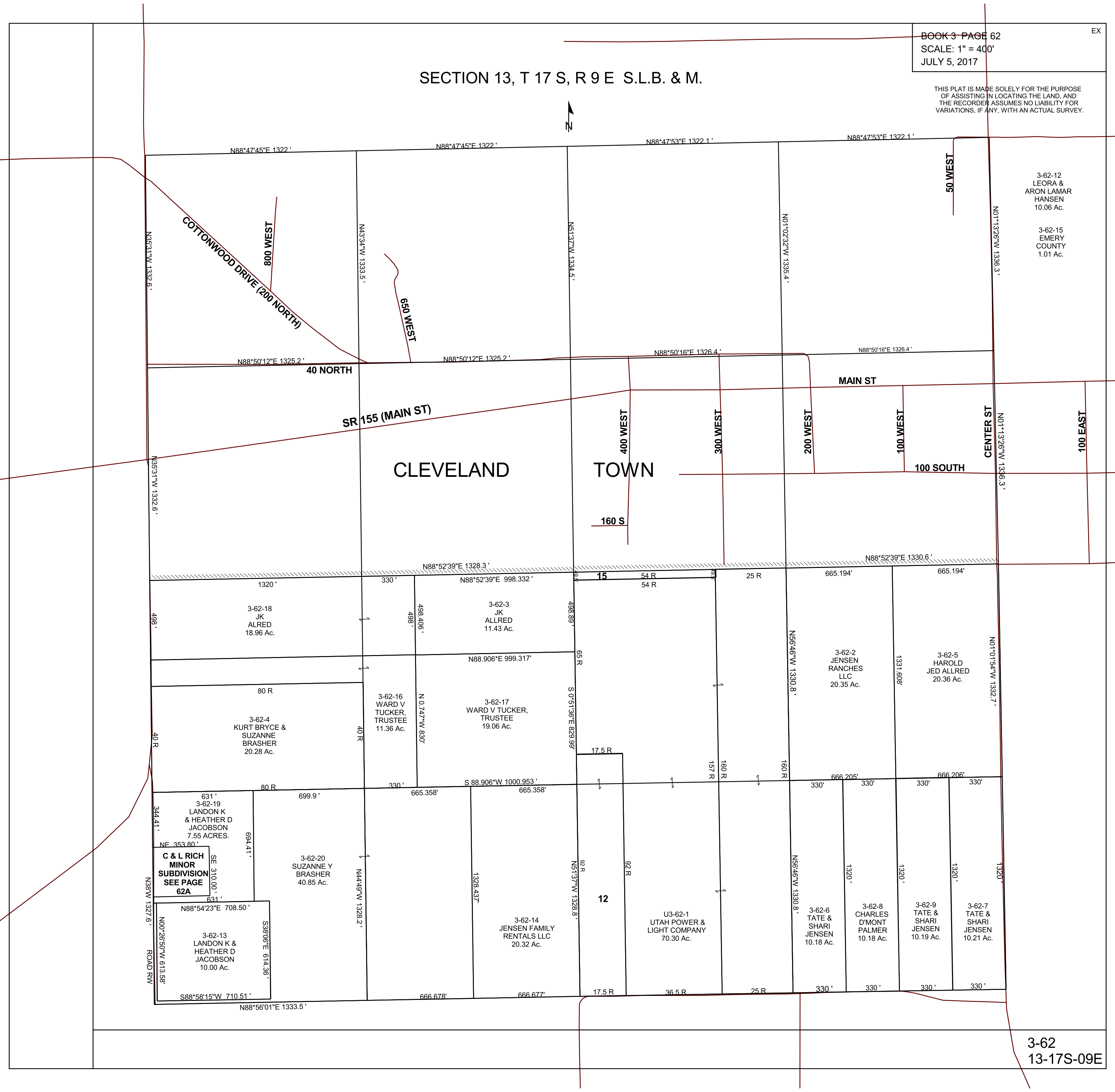


SECTION 13, T 17 S, R 9 E S.L.B. & M.

THIS PLAT IS MADE SOLELY FOR THE PURPOSE OF ASSISTING IN LOCATING THE LAND, AND THE RECORDER ASSUMES NO LIABILITY FOR VARIATIONS, IF ANY, WITH AN ACTUAL SURVEY.



3-62-12  
LEORA &  
ARON LAMAR  
HANSEN  
10.06 Ac.

3-62-15  
EMERY  
COUNTY  
1.01 Ac.

CLEVELAND

TOWN