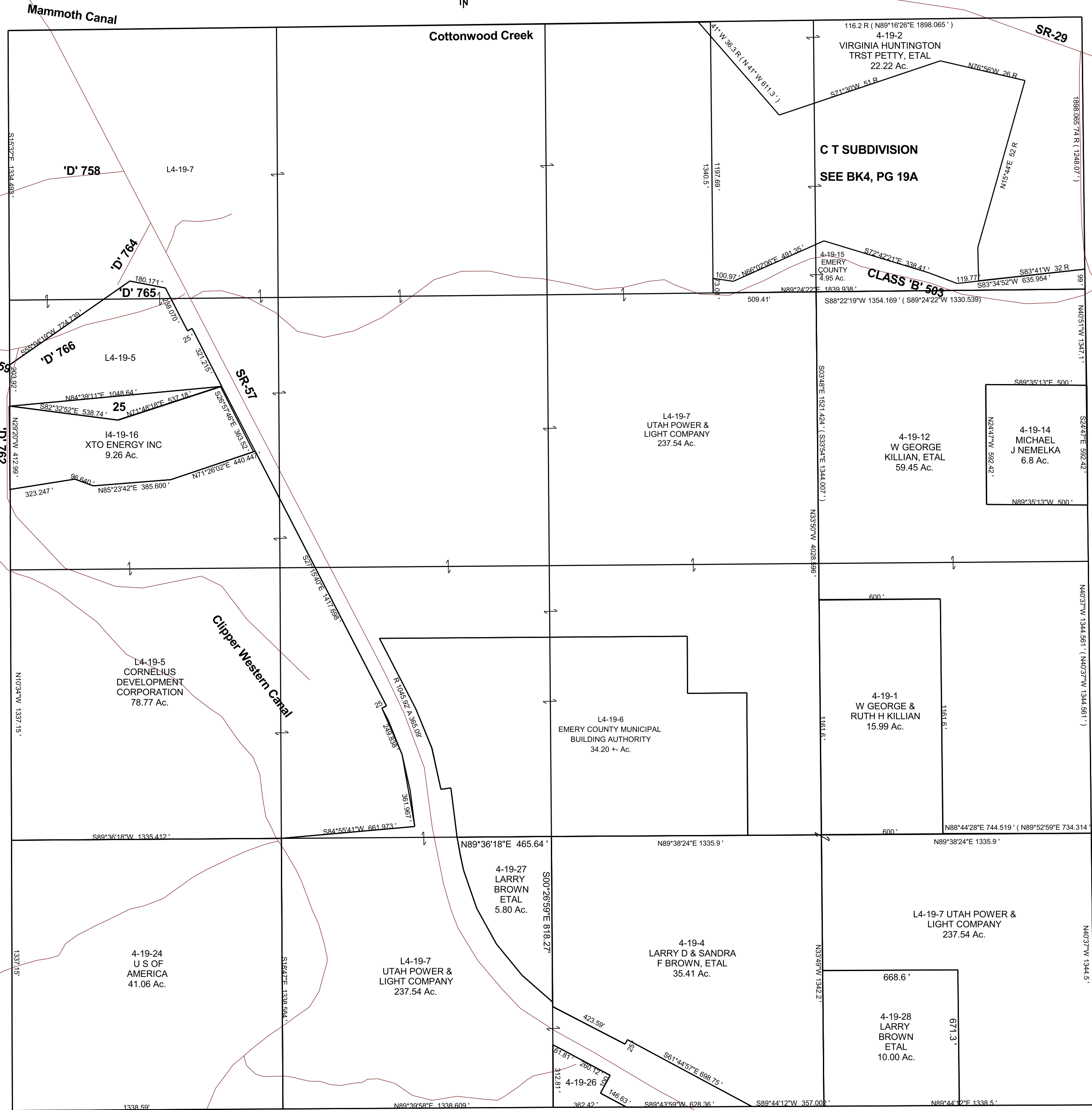


SECTION 24, T 18 S, R 7 E S.L.B. & M.



THIS PLAT IS MADE SOLELY FOR THE PURPOSE OF ASSISTING IN LOCATING THE LAND, AND THE RECORDER ASSUMES NO LIABILITY FOR VARIATIONS, IF ANY, WITH AN ACTUAL SURVEY.



14-19-25
XTO ENERGY INC
1.44 Ac.
4-19-26
COTTONWOOD
CREEK
CONSOLIDATED
IRRIGATION
COMPANY
1.50 Ac.

CLASS 'B' 503

C T SUBDIVISION
SEE BK4, PG 19A

CLASS 'B' 503

'D' 758

'D' 764

'D' 765

'D' 766

'D' 759

'D' 762

Clipper Western Canal

Cottonwood Creek

SR-29

SR-57

L4-19-7

L4-19-5

14-19-16
XTO ENERGY INC
9.26 Ac.

L4-19-5
CORNELIUS
DEVELOPMENT
CORPORATION
78.77 Ac.

L4-19-7
UTAH POWER &
LIGHT COMPANY
237.54 Ac.

4-19-12
W GEORGE
KILLIAN, ETAL
59.45 Ac.

4-19-14
MICHAEL
J NEMELKA
6.8 Ac.

L4-19-6
EMERY COUNTY MUNICIPAL
BUILDING AUTHORITY
34.20 +- Ac.

4-19-1
W GEORGE &
RUTH H KILLIAN
15.99 Ac.

4-19-27
LARRY
BROWN
ETAL
5.80 Ac.

L4-19-7
UTAH POWER &
LIGHT COMPANY
237.54 Ac.

4-19-4
LARRY D & SANDRA
F BROWN, ETAL
35.41 Ac.

L4-19-7 UTAH POWER &
LIGHT COMPANY
237.54 Ac.

4-19-24
U S OF
AMERICA
41.06 Ac.

4-19-28
LARRY
BROWN
ETAL
10.00 Ac.

4-19-26