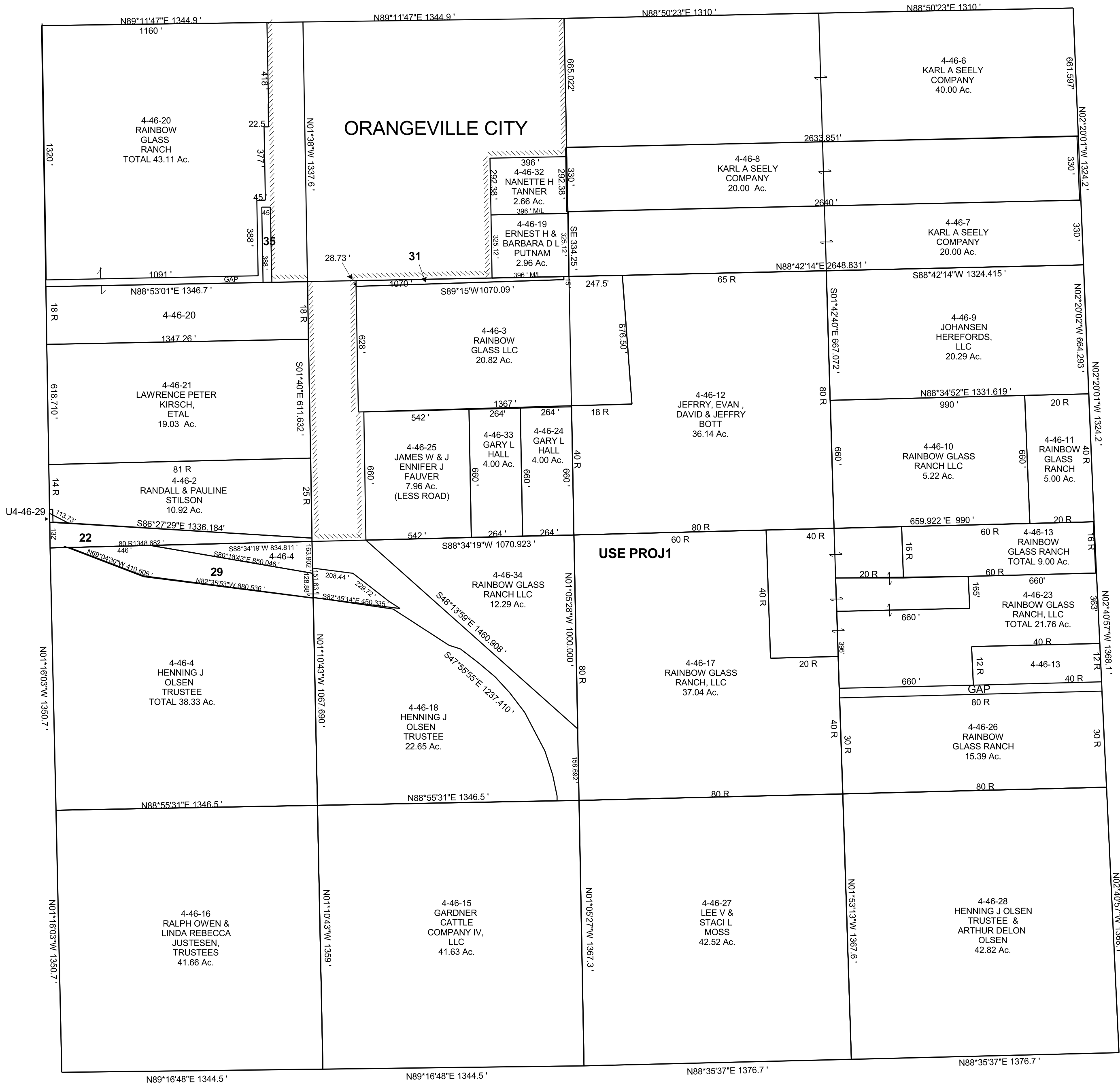


SECTION 32, T 18 S, R 08 E S.L.B. & M.

BOOK 4 PAGE 46
SCALE: 1" = 400'
MARCH 8, 2018

THIS PLAT IS MADE SOLELY FOR THE PURPOSE
OF ASSISTING IN LOCATING THE LAND, AND
THE RECORDER ASSUMES NO LIABILITY FOR
VARIATIONS, IF ANY, WITH AN ACTUAL SURVEY.



4-46-22
LYNN WILLIAM
& LORI ANN
TUTTLE
2.30 AC.

U4-46-29
UTAH POWER &
LIGHT COMPANY
TOTAL 4.88 AC.

4-46-31
ERNEST H &
BARBARA D L
PUTNAM
0.54 AC.

4-46-35
CODY JOE &
SHAREL SHARMON
DALE
0.40 AC.