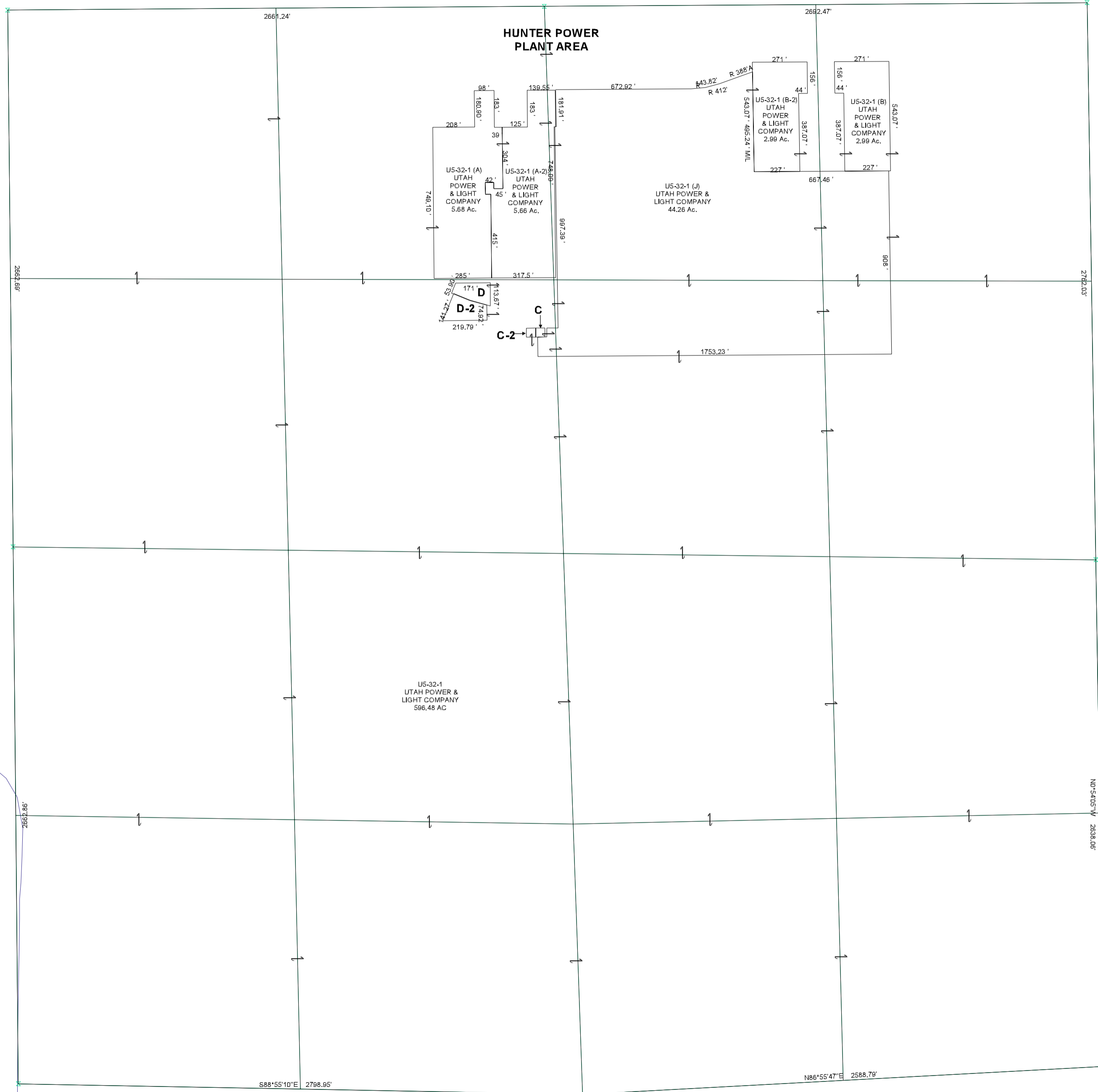


SECTION 16, T 19 S, R 08 E S.L.B. & M.

THIS PLAT IS MADE SOLELY FOR THE PURPOSE
OF ASSISTING IN LOCATING THE LAND, AND
THE RECORDER ASSUMES NO LIABILITY FOR
VARIATIONS, IF ANY, WITH AN ACTUAL SURVEY.



- U5-32-1 (C)
UTAH POWER &
LIGHT COMPANY
0.047 Ac.
- U5-32-1 (C-2)
UTAH POWER &
LIGHT COMPANY
0.048 Ac.
- U5-32-1 (D)
UTAH POWER &
LIGHT COMPANY
0.36 Ac.
- U5-32-1 (D-2)
UTAH POWER &
LIGHT COMPANY
0.46 Ac.